



Check It Out



JANUARY 2017 · YOUR GUIDE TO THE
LAREDO REGIONAL CAMPUS LIBRARY

LIBRARY HOURS

MONDAY

9 AM – 5 PM

TUESDAY

9 AM – 5 PM

WEDNESDAY

9 AM – 5 PM

THURSDAY

9 AM – 5 PM

FRIDAY

8 AM – 12 PM

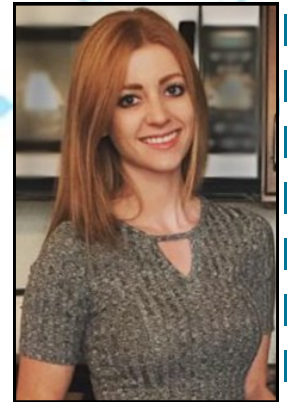
SATURDAY

CLOSED

SUNDAY

Briscoe Library Welcomes Kirsten Lorenzen

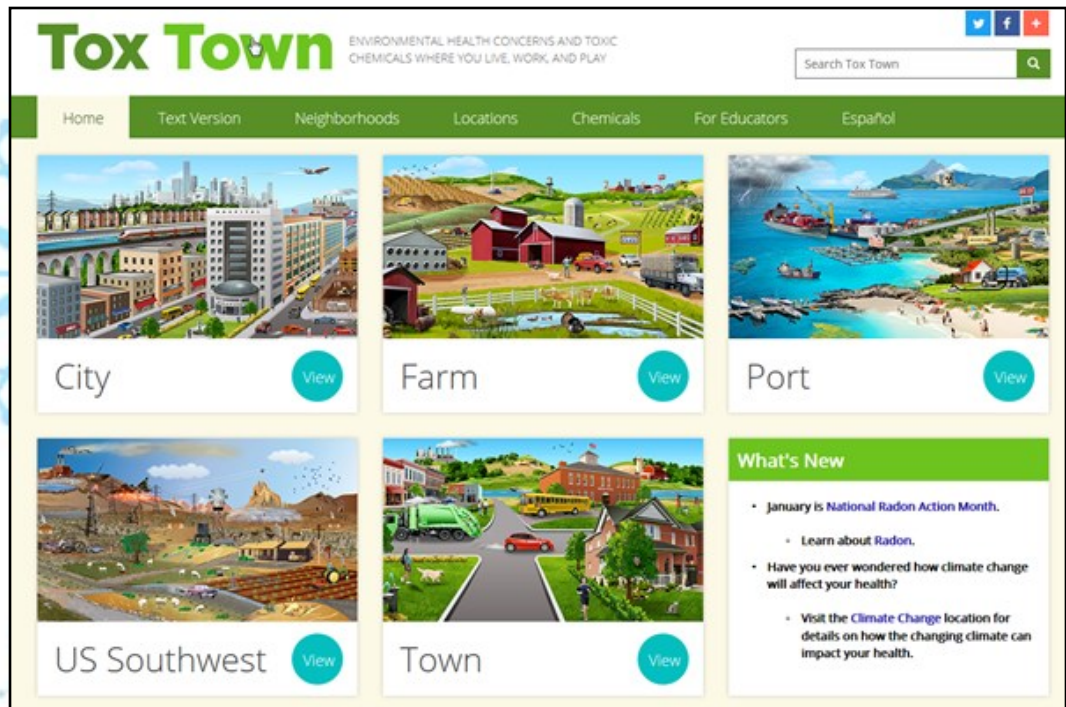
UT Health Libraries welcome Kirsten Lorenzen as the new Outreach and Community Engagement Librarian at the Briscoe Library. Kirsten comes to UT Health San Antonio from the San Antonio Public Library where she provided outreach programming as a children's librarian. Previously, she worked as a Library Services Assistant IV at UTSA's John Peace Library and as a Project Manager for an advertising and brand management company. A native of California, Kirsten received a Master's in Library and Information Science from San Jose State University in December 2015 and also holds a B.A. in English and minor in Communication from the University of California, Davis.



With her experience in marketing, Kirsten will be instrumental in enhancing the library's outreach and community engagement initiatives by promoting library resources, services, and events to the campus and wider community. We are thrilled to have Kirsten as a member of our Library team.

Tox Town Gets a Facelift for 2017

[Tox Town](#) has upped its game in 2017 with an updated and easier to navigate homepage with a new color scheme. Engaging photorealistic neighborhoods are now programmed with HTML 5 so you can easily view the site on your computer and hand held devices. Come explore imaginary neighborhoods (city, farm, port, town, US Southwest) where you will find the same trusted information you have come to expect from Tox Town.



EYL

*Please note that the library will be closed on Monday, January 16th, in observance of Martin Luther King Jr. Day.

*Please note that copying services are currently out of order. The library is in the process of acquiring new equipment. We apologize for the inconvenience. In the meantime, please keep in mind that print services are functioning and still available.



library.uthscsa.edu